



# Cat<sup>®</sup> 306 CR

## MINI HYDRAULIC EXCAVATOR

### FEATURES:

The Cat<sup>®</sup> 306 CR Mini Excavator delivers maximum power and performance in a mini size to help you work in a wide range of applications.

#### ALL DAY COMFORT

- Your choice of a canopy (availability dependent on region) or a sealed and pressurized cab equipped with an improved air conditioning system, adjustable wrist rests and a suspension seat to help keep you working comfortably all day long.

#### EASY TO OPERATE

- Controls are easy to use and the intuitive Next Generation Monitor provides customizable machine operator preferences and easy to read machine information.

#### STICK STEER TRAVEL MODE

- Moving around the job site is even easier with Cat Stick Steer. Easily switch from traditional travel controls with levers and pedals to joystick controls with a push of a button. The benefit of less effort and improved control is in your hands!

#### BIG PERFORMANCE IN A MINI DESIGN

- Increased lifting, swinging, travel and multi-functioning performance help you get the job done more efficiently.

#### SAFETY ON THE JOB SITE

- Your safety is our top priority. The Cat Mini Excavator is designed to help keep you safe on the job. An optional back-up camera, courtesy work lights and a fluorescent retractable seat belt are just a few of the safety features we've built into the machine.

#### SIMPLE SERVICE FOR LESS DOWNTIME

- Maintenance is quick and easy on the Cat Mini Excavator. Routine check points are easy to access at ground level with grouped service points and robust service panels.

#### LOWER OPERATING COSTS

- Equipped with features such as auto idle, auto engine shutdown, and efficient hydraulics with a variable displacement pump, the Cat Mini Excavator was designed with reducing your operating costs in mind.

#### CHOICES

- Configure the machine to meet your specific application needs with a straight blade, angle blade, or Extra Tool Carrier (XTC).

#### UNMATCHED DEALER SUPPORT

- Your Cat dealer is here to help you reach your business goals. From providing equipment solutions to operator training to service needs and beyond, your Cat dealer is ready to help.

## Specifications

### Engine

Engine Model	Cat C2.4 Turbo	
<b>Rated Net Power @ 2,200 rpm</b>		
U.S. EPA Tier 4 Final/EU Stage V	41.7 kW	55.9 hp
ISO 9249/EEC 80/1269		
<b>Gross Power</b>		
ISO 14396	43.2 kW	57.9 hp
Bore	87 mm	3.4 in
Stroke	102.4 mm	4 in
Displacement	2.43 L	148 in <sup>3</sup>

### Weights

Minimum Operating Weight with Canopy*	6410 kg	14,134 lb
Maximum Operating Weight with Canopy**	7090 kg	15,633 lb
Minimum Operating Weight with Cab*	6470 kg	14,266 lb
Maximum Operating Weight with Cab**	7150 kg	15,766 lb

\*Minimum Weight is based on rubber tracks, operator, full fuel tank, standard stick, fixed blade and no bucket.

\*\*Maximum Weight is based on steel tracks with pads, extra counterweight, operator, full fuel tank, long stick, fixed blade and no bucket.



# 306 CR Mini Hydraulic Excavator

## Weight Increase from Minimum Configuration

Counterweight	250 kg	551 lb
Long Stick	44 kg	97 lb
Steel Tracks with Pads	375 kg	827 lb
Angle Blade	102 kg	225 lb
XTC Carriage (no tool)	64 kg	141 lb

## Travel System

Travel Speed – High	5.0 km/h	3.1 mph
Travel Speed – Low	2.8 km/h	1.7 mph
Maximum Traction Force – High Speed	31 kN	6,969 lbf
Maximum Traction Force – Low Speed	56 kN	12,589 lbf
Ground Pressure – Minimum Weight	35.4 kPa	5.1 psi
Ground Pressure – Maximum Weight	39.1 kPa	5.7 psi
Gradeability (maximum)	30 degrees	

## Service Refill Capacities

Cooling System	10.0 L	2.6 gal
Engine Oil	8.0 L	2.1 gal
Fuel Tank	130 L	34.3 gal
Hydraulic Tank	53 L	14 gal
Hydraulic System	104 L	27.5 gal

## Hydraulic System

Load Sensing Hydraulics with Variable Displacement Piston Pump		
Pump Flow @ 2,400 rpm	151 L/min	40 gal/min
Operating Pressure – Equipment	24 500 kPa	3,553 psi
Operating Pressure – Travel	24 500 kPa	3,553 psi
Operating Pressure – Swing	22 500 kPa	3,263 psi
Auxiliary Circuit – Primary		
Flow	90 L/min	24 gal/min
Pressure	24 500 kPa	3,553 psi
Auxiliary Circuit – Secondary		
Flow	33 L/min	9 gal/min
Pressure	24 500 kPa	3,553 psi
Digging Force – Stick (Standard)	29.5 kN	6,632 lbf
Digging Force – Stick (Long)	26.5 kN	5,957 lbf
Digging Force – Bucket	51.5 kN	11,578 lbf

## Swing System

Machine Swing Speed	11 rpm
Boom Swing – Left	60 degrees
Boom Swing – Right	65 degrees

## Blade

Straight Blade Width	1980 mm	78 in
Straight Blade Height	390 mm	15.4 in
Angle Blade Width	1980 mm	78 in
Angle Blade Height	400 mm	15.7 in

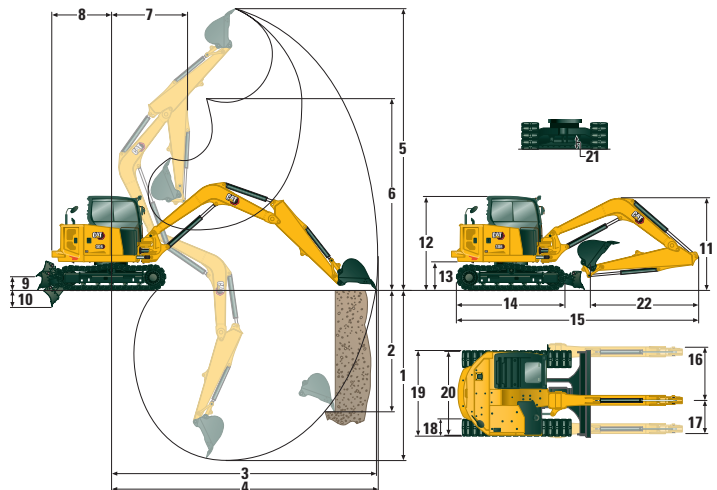
## Certification – Cab

Roll Over Protective Structure (ROPS)	ISO 12117-2:2008
Tip Over Protective Structure (TOPS)	ISO 12117:1997
Top Guard	ISO 10262:1998 (Level II)

## Sound

Operator Sound Pressure (ISO 6396:2008)	72 dB(A)
Average Exterior Sound Pressure (ISO 6395:2008)	99 dB(A)

• European Union Directive “2000/14/EC”



## Dimensions

	Standard Stick	Long Stick
<b>1</b> Dig Depth	3710 mm (146 in)	4110 mm (162 in)
<b>2</b> Vertical Wall	2710 mm (107 in)	3165 mm (125 in)
<b>3</b> Maximum Reach at Ground Level	6130 mm (241 in)	6535 mm (257 in)
<b>4</b> Maximum Reach	6295 mm (248 in)	6685 mm (263 in)
<b>5</b> Maximum Dig Height	5835 mm (230 in)	6130 mm (241 in)
<b>6</b> Maximum Dump Clearance	4325 mm (170 in)	4610 mm (182 in)
<b>7</b> Boom in Reach	2485 mm (98 in)	2960 mm (117 in)
<b>8</b> Tail Swing with Counterweight	1475 mm (58 in)	1475 mm (58 in)
Tail Swing without Counterweight	1350 mm (53 in)	1350 mm (53 in)
<b>9</b> Maximum Blade Height	415 mm (16 in)	415 mm (16 in)
<b>10</b> Maximum Blade Depth	600 mm (24 in)	600 mm (24 in)
<b>11</b> Transport Height	1755 mm (69 in)	2410 mm (95 in)
<b>12</b> Cab Height	2545 mm (100 in)	2545 mm (100 in)
<b>13</b> Swing Bearing Height	672 mm (27 in)	672 mm (27 in)
<b>14</b> Overall Undercarriage Length	2580 mm (102 in)	2580 mm (102 in)
<b>15</b> Overall Shipping Length	5975 mm (235 in)	5950 mm (234 in)
<b>16</b> Boom Swing Right	910 mm (36 in)	910 mm (36 in)
<b>17</b> Boom Swing Left	735 mm (29 in)	735 mm (29 in)
<b>18</b> Track Belt/Shoe Width	400 mm (16 in)	400 mm (16 in)
<b>19</b> Overall Track Width	1980 mm (78 in)	1980 mm (78 in)
<b>20</b> Width Over Upper House	1950 mm (77 in)	1950 mm (77 in)
<b>21</b> Ground Clearance	306 mm (12 in)	306 mm (12 in)
<b>22</b> Stick Length	1580 mm (62 in)	1980 mm (78 in)

## Air Conditioning System

The air conditioning system on this machine contains the fluorinated greenhouse gas refrigerant R134a (Global Warming Potential = 1287). The system contains 0.9 kg of refrigerant which has a CO<sub>2</sub> equivalent of 1.287 metric tonnes.

## Lift Capacities with Cab – Minimum Configuration

Lift Point Height			Lift Point radius 3 m (9.8 ft)			Lift Point radius 4.5 m (14.8 ft)			Lift Point radius (Maximum)			
			Over Front			Over Front			Over Front			m (ft)
			Blade Down	Blade Up	Over Side	Blade Down	Blade Up	Over Side	Blade Down	Blade Up	Over Side	
4.5 m (14.8 ft)	Standard Stick	kg (lb)							*1225 (*2,701)	*1225 (*2,701)	*1225 (*2,701)	4.16 (13.6)
3 m (9.8 ft)	Standard Stick	kg (lb)				*1725 (*3,804)	1270 (2,800)	1040 (2,293)	*1120 (*2,470)	*1115 (*2,459)	830 (1,830)	5.18 (17.0)
1.5 m (4.9 ft)	Standard Stick	kg (lb)	*3715 (*8,192)	2215 (4,884)	1735 (3,826)	*2080 (*4,586)	1215 (2,679)	985 (2,172)	*1195 (*2,635)	905 (1,996)	735 (1,621)	5.51 (18.1)
0 m (0 ft)	Standard Stick	kg (lb)	*3775 (*8,324)	2130 (4,697)	1655 (3,649)	*2290 (*5,049)	1175 (2,591)	945 (2,084)	*1475 (*3,252)	935 (2,062)	760 (1,676)	5.32 (17.5)

Minimum Weight with Cab includes rubber tracks, no extra counterweight, operator, full fuel tank, standard stick, fixed blade and no bucket.

## Lift Capacities with Cab – Maximum Configuration

Lift Point Height			Lift Point radius 3 m (9.8 ft)			Lift Point radius 4.5 m (14.8 ft)			Lift Point radius (Maximum)			
			Over Front			Over Front			Over Front			m (ft)
			Blade Down	Blade Up	Over Side	Blade Down	Blade Up	Over Side	Blade Down	Blade Up	Over Side	
4.5 m (14.8 ft)	Long Stick	kg (lb)				*1455 (*3,208)	*1455 (*3,208)	1240 (2,734)	*1210 (*2,668)	*1210 (*2,668)	*1210 (*2,668)	4.70 (15.4)
3 m (9.8 ft)	Long Stick	kg (lb)				*1515 (*3,341)	*1515 (*3,341)	1225 (2,701)	*1115 (*2,459)	*1115 (*2,459)	870 (1,918)	5.60 (18.4)
1.5 m (4.9 ft)	Long Stick	kg (lb)				*1920 (*4,234)	1400 (3,087)	1165 (2,569)	*1175 (*2,591)	940 (2,073)	785 (1,731)	5.90 (19.4)
0 m (0 ft)	Long Stick	kg (lb)	*3710 (*8,181)	2430 (5,358)	1940 (4,278)	*2235 (*4,928)	1345 (2,966)	1110 (2,448)	*1390 (*3,065)	965 (2,128)	800 (1,764)	5.73 (18.8)

Maximum Weight with Cab includes steel tracks with pads, extra counterweight, operator, full fuel tank, long stick, fixed blade and no bucket.

## Lift Capacities with Canopy – Minimum Configuration

Lift Point Height			Lift Point radius 3 m (9.8 ft)			Lift Point radius 4.5 m (14.8 ft)			Lift Point radius (Maximum)			
			Over Front			Over Front			Over Front			m (ft)
			Blade Down	Blade Up	Over Side	Blade Down	Blade Up	Over Side	Blade Down	Blade Up	Over Side	
4.5 m (14.8 ft)	Standard Stick	kg (lb)							*1225 (*2,701)	*1225 (*2,701)	*1225 (*2,701)	4.16 (13.6)
3 m (9.8 ft)	Standard Stick	kg (lb)				*1725 (*3,804)	1265 (2,789)	1035 (2,282)	*1120 (*2,470)	*1115 (*2,459)	825 (1,819)	5.18 (17.0)
1.5 m (4.9 ft)	Standard Stick	kg (lb)	*3715 (*8,192)	2200 (4,851)	1725 (3,804)	*2080 (*4,586)	1210 (2,668)	980 (2,161)	*1195 (*2,635)	900 (1,985)	730 (1,610)	5.51 (18.1)
0 m (0 ft)	Standard Stick	kg (lb)	*3775 (*8,324)	2115 (4,664)	1650 (3,638)	*2290 (*5,049)	1170 (2,580)	940 (2,073)	*1475 (*3,252)	930 (2,051)	755 (1,665)	5.32 (17.5)

Minimum Weight with Canopy includes rubber tracks, no extra counterweight, operator, full fuel tank, standard stick, fixed blade and no bucket.

## Lift Capacities with Canopy – Maximum Configuration

Lift Point Height			Lift Point radius 3 m (9.8 ft)			Lift Point radius 4.5 m (14.8 ft)			Lift Point radius (Maximum)			
			Over Front			Over Front			Over Front			m (ft)
			Blade Down	Blade Up	Over Side	Blade Down	Blade Up	Over Side	Blade Down	Blade Up	Over Side	
4.5 m (14.8 ft)	Long Stick	kg (lb)				*1455 (*3,208)	*1455 (*3,208)	1240 (2,734)	*1210 (*2,668)	*1210 (*2,668)	*1210 (*2,668)	4.70 (15.4)
3 m (9.8 ft)	Long Stick	kg (lb)				*1515 (*3,341)	*1515 (*3,341)	1220 (2,690)	*1115 (*2,459)	*1115 (*2,459)	865 (1,907)	5.60 (18.4)
1.5 m (4.9 ft)	Long Stick	kg (lb)				*1920 (*4,234)	1395 (3,076)	1160 (2,558)	*1175 (*2,591)	935 (2,062)	780 (1,720)	5.90 (19.4)
0 m (0 ft)	Long Stick	kg (lb)	*3710 (*8,181)	2415 (5,325)	1935 (4,267)	*2235 (*4,928)	1340 (2,955)	1105 (2,437)	*1390 (*3,065)	960 (2,117)	800 (1,764)	5.73 (18.8)

Maximum Weight with Canopy include steel tracks with pads, extra counterweight, operator, full fuel tank, long stick, fixed blade and no bucket.

\*The above loads are in compliance with hydraulic excavator lift capacity rating standard ISO 10567:2007 and they do not exceed 87% of hydraulic lifting capacity or 75% of tipping capacity. The excavator bucket weight is not included on this chart.

# 306 CR Mini Hydraulic Excavator

## Standard and Optional Equipment

Standard and optional equipment may vary. Consult your Cat dealer for details.

	Standard	Optional		Standard	Optional
<b>OPERATOR ENVIRONMENT – CAB AND CANOPY</b>			<b>UNDERCARRIAGE</b>		
Top Guard ISO 10262 1998 Level I	✓		Greased and Lubricated Track	✓	
ROPS ISO 12117-2:2008	✓		Hydraulic Track Adjusters	✓	
Stick Steer Mode	✓		Tie Down Eyes on Track Frame	✓	
Travel Cruise Control	✓		Dozer Straight Blade	✓	
Control Pattern Changer	✓		Angle Blade		✓
Adjustable Wrist Rests	✓		Extra Tool Carrier (XTC)		✓
Molded Footrests	✓		Dozer Float	✓	
Removable, Washable Floor Mat	✓		Bolt-on, Reversible Wear Edge	✓	
Travel Pedals and Hand Levers	✓		Rubber Tracks	✓	
Cat Key with Passcode Option	✓		Steel Tracks (450 mm/17.7 in wide)		✓
Hydraulic Lockout Controls	✓		Steel Track with Rubber Pads		✓
High Back, Suspension Seat	✓		<b>BOOM, STICK AND LINKAGES</b>		
Retractable Seat Belt (75 mm/3 in)	✓		One Piece Boom (3055 mm/120.3 in)	✓	
Coat Hook	✓		Standard Stick (1580 mm/62.2 in)	✓	
Cup Holder	✓		Long Stick (190 mm/7.8 in)		✓
Literature Holder	✓		Front Shovel Capable – Pin-on/Manual Coupler/Hydraulic Coupler for Cat Tools	✓	
Mounting Bosses for Top and Front Guards	✓		Thumb Ready	✓	
Signaling/Warning Horn	✓		Attachments including Buckets, Augers and Hammers		✓
Cab and (left side) Boom Work Lights	✓		2nd Auxiliary Hydraulic Lines		✓
Utility Space for Mobile Phone	✓		Boom Lowering Check Valve		✓
Rain Visor		✓	Stick Lowering Check Valve		✓
Next Generation Color LCD Monitor (IP66)	✓		Certified Lifting Eye		✓
– Fuel Level and Coolant Temperature Gauges	✓		<b>ELECTRICAL</b>		
– Maintenance and Machine Monitoring	✓		12 Volt Electrical System	✓	
– Performance and Machine Adjustments	✓		90 Ampere Alternator	✓	
– Numeric Security Code	✓		650 CCA Maintenance Free Battery	✓	
– Multiple Languages	✓		Battery Disconnect	✓	
– Camera Ready (IP68 & IP69K)	✓		Circuit Breaker	✓	
– Hour Meter with Wake Up Switch	✓		Ignition Key Stop Switch	✓	
Next Generation Advanced Monitor		✓	Signaling/Warning Horn	✓	
(below are all included with Next Generation Advanced Monitor option)			Product Link™ Basic (regulations apply)	✓	
– Touch Screen			Product Link Elite (regulations apply)		✓
– Site Reference System			Travel Alarm	✓	
– High Definition Camera Capable (IP68 & IP69K)			Camera		✓
– Numeric Security Code			Rotating Beacon		✓
<b>OPERATOR ENVIRONMENT – CAB ONLY</b>			<b>GUARDING</b>		
Operator Sound Pressure 72 dB(A) ISO 6396:2008	✓		Heavy Duty Front Guard ISO 10262 1998 Level II		✓
HVAC with Automatic Temperature Control	✓		Mesh Front Guard ISO 10262 1998 Level I		✓
Integrated Lower Front Window	✓		Overhead Cab Guard ISO 10262 1998 Level II		✓
Assisted Front Window Overhead Storage	✓		Polycarbonate Front Window EN356 P5A (Cab Only)		✓
Rear Window Emergency Exit	✓		Track Guards		✓
LED Interior Light	✓		<b>OTHER</b>		
12V Power Socket	✓		Locks on External Enclosure Doors	✓	
Radio – Bluetooth®, Auxiliary, Microphone, USB (charging only)	✓		Lockable Fuel Cap	✓	
Skylight	✓		Beacon Socket	✓	
Jog dial interface	✓		Rear Reflectors	✓	
Cab Heat Only		✓	Additional Counterweight		✓
Air Suspension Heated Seat		✓	Water Jacket Heater		✓
			Refueling Pump		✓

For more complete information on Cat products, dealer services, and industry solutions, visit us on the web at [www.cat.com](http://www.cat.com)

© 2020 Caterpillar  
All rights reserved

Materials and specifications are subject to change without notice. Featured machines in photos may include additional equipment. See your Cat dealer for available options.

CAT, CATERPILLAR, LET'S DO THE WORK, their respective logos, "Caterpillar Corporate Yellow," the "Power Edge" and Cat "Modern Hex" trade dress as well as corporate and product identity used herein, are trademarks of Caterpillar and may not be used without permission.

AEHQ8236-01 (05-2020)  
Replaces AEHQ8236  
Build Number: 07A  
(North America, Europe, ANZP)

